

CARTRIDGES

AMPOULES

TUBULAR VIALS



ABOUT US

Kapoor Glass has been at the forefront of Primary Glass Packaging in India for over six decades and across three generations. The company operates a modern ISO 9001:2015 certified facility producing high-quality Ampoules, Vials & Cartridges using state-of-the-art technology.

The Ampoules, Tubular Vials, and Cartridges are fully compliant with European, US, and Japanese Pharmacopoeias.

Majority of our production is exported worldwide to over 37 countries, including the USA, countries within the EU, and other highly regulated Markets.

The company imports high-quality USP Type 1 glass tubing from leading producers in Europe, Japan and USA.

CARTRIDGES

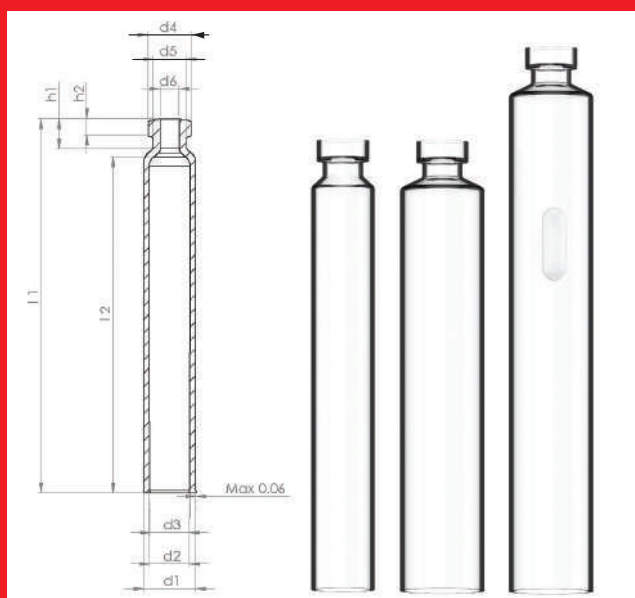
Glass Cartridges are offered in accordance with ISO 11040-1 & ISO 13926-1 with 100% in-process Camera Inspection for Dimensional and Cosmetic Quality.

Types of Cartridges

- › 1.8ml Dental
- › 3ml Insulin
- › Dual Chamber/Bypass

Features

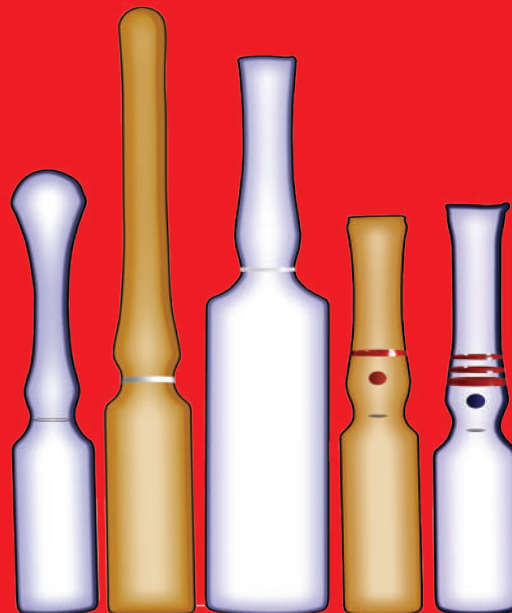
- › Capacity upto 10ml
- › Cosmetic quality ceramic screen printing
- › Identification rings/graduation
- › External silicon coating
- › Automatic robot packing in a controlled environment



Tube OD d1 mm		Tube ID d2 mm		d3 min mm	d4 mm		d5 mm		d6 mm		h1 mm		h2 mm	
	Tol		Tol			Tol		Tol		Tol		Tol		Tol
8.65		6.85		6.55										
10.75		8.65		8.3										
10.85	±0.1	8.65	±0.09	8.35	7.15		5.5	±0.25	3.15		5.0		2.9	±0.1
10.95		9.25		8.95										
11.6		9.7		9.35										
14.0	±0.11	12.0	±0.1	11.65		±0.2	7.2							
14.45		11.85		11.5	9.5			±0.35	4.5					
17.05	±0.17	14.25		13.9			7.75							±0.15
18.25	±0.13	16.05	±0.15	15.5										
22.05	±0.17	19.05		18.55	13.0		11.0	max.	7.0		8.0		3.6	±0.2
											±0.5			

AMPOULES

Kapoor Glass manufactures high-quality ampoules on the latest European lines. All ampoules are produced with 100% camera inspection to eliminate defects and produce tolerances tighter than ISO/DIN standards. Robotic loading and automatic feeding of glass tubes to minimize human intervention and improve yield & efficiencies. Ampoules comply with ISO 9187:2010. Sampling plan as per ISO 2859:1 and AQL limits based on ECV standards.



Types of Ampoules

- › Form B - Stem Cut
- › Form C - Flame Cut
- › Form D - Rota/Closed
- › Form E - Marzocchi

Breaking Systems

- › Color Break Ring
- › Optimized One-Point Cut (Dot and Cut with 100% camera inspection)
- › Score Break (360° Score mark)

Features

- › Upto 3 separate color rings – ceramic colours free of heavy metals are available
- › High-quality customized screen printing
- › External silicon coating to reduce surface scratches during handling
- › Internal Ammonium sulphate treatment for de-alkalization of the container surface for improved stability
- › Gamma sterilization

Innovate @KapoorGlass

Internally funded R&D function continuously works on developing breakthrough ideas and features to improve ampoule and vial manufacturing processes.

- › **Dimension⁺** is the new benchmark for dimensional accuracy of key parameters of ampoules and is achieved using a high resolution vision system with internally developed software utilising advanced learning control algorithms.
- › **Safe OPC** offers consistent, clean breaking with reduce particle generation by eliminating ampoules that would normally break at both ends of the specified pressure range.
- › The unique **Innova Surface⁺** process reduces surface friction and lowers breakage while washing and filling.
- › **Type 1 Optima** ensure a significant reduction in Alkali release for sensitive medicines and extend shelf life.



DIMENSION⁺

SafeOPC

INNOVA SURFACE⁺

**OPTIMA
SOLUTION**

TUBULAR VIALS

Kapoor Glass manufactures high-quality USP Type I Tubular Vials on the latest Servo Controlled German & Italian Lines for exceptional accuracy. Vials are produced with Japanese 'Hot-End' and 'Cold-End' Camera vision systems equipped with Statistical Process Control (SPC) for 100% online dimensional inspection of all key parameters. Robotic loading directly from the tube bundle and automatic feeding of the Glass tube minimizes human intervention and improves yield and efficiency whilst reducing scratches. Robotic packing in a controlled environment with state-of-art cosmetic camera systems ensures consistently high-quality supplies.



Features

- › High-quality customized screen printing
- › External silicon coating to reduce surface scratches during handling
- › Internal Ammonium Sulphate treatment for de-alkalization of the container surface for improved stability

Cosmetics - Perfume Samplers

Kapoor Glass, partners with leading cosmetic companies to produce high-quality, attractive & chic Perfume Samplers as well as Vials with innovative spray solutions in both 'Screw On' and 'Snap Fit' variants. These come in a variety of sizes from 0.5ml to 50ml and can be decorated with high-quality ceramic printing. The company collaborates with European and American spray pump and applicator stick manufacturers to offer a specialty product that improves brand value and customer perception.

TYPE OF VIALS (1ml to 50ml)

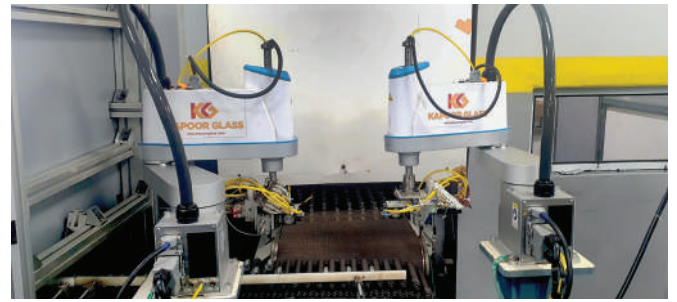
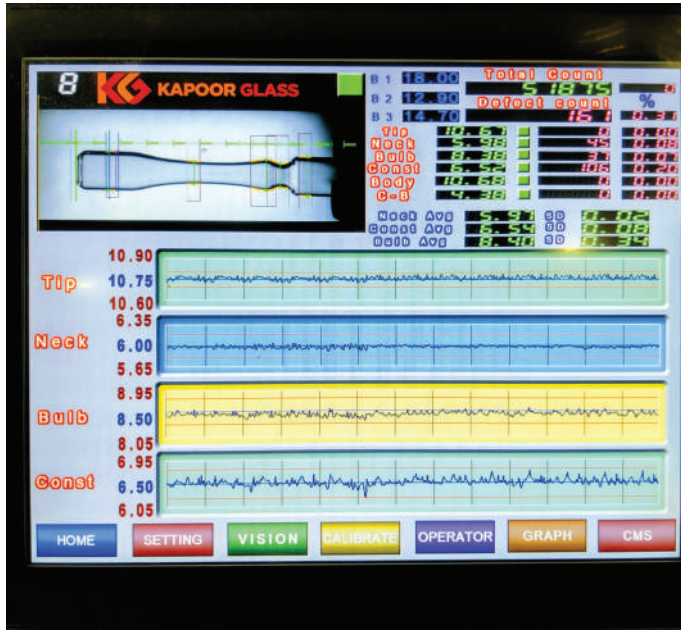
- › Penicillin Neck
- › Screw Neck
- › Lyophilized
- › High-Performance Liquid Chromatography (HPLC)
- › Blow Back (European & American)

Vials can be manufactured as per DIN/ISO Specializations as well as customized to special requirements.

LYOsafe sets the new standard for Vials that undergo a Lyophilization Cycle. Thickness at over 1000 points for each and every vial is measured and profiled to ensure uniformity and repeatability.



LYOsafe



OUR GLOBAL REACH



Unit 1 Glass Ampoules Division

Plot No. 200/201/212,
Jawahar Co-Operative Industrial Estate,
Kamothe, Panvel, Navi Mumbai-410209,
India.

Unit 2 Tubular Vials and Cartridges for Pen Systems

Plot No. 253/ 254,
Jawahar Co-Operative Industrial Estate,
Kamothe, Panvel, Navi Mumbai-410209,
India.

Unit 3 Warehouse

Plot No. 181,
Jawahar Co-Operative Industrial Estate,
Kamothe, Panvel, Navi Mumbai-410209,
India.



Kapoor House, A-37, Street No 2, MIDC, Andheri East, Mumbai - 400093, India.



+91 (22)27431992 / 2743 1962 / 27431398



info@kapoorglass.com



www.kapoorglass.com

